

Smart Mini GPS Tracker Waterproof Bluetooth Anti-Lost Device

Track What Matters. Anytime. Anywhere.

The [Smart Mini GPS Tracker](#) is a lightweight, compact Bluetooth 4.0-enabled device that helps you keep track of important items like keys, wallets, pets, bags, and even children. Simply connect it to your Android smartphone via the [iSearching App](#), and get real-time alerts when your tracked item moves out of range. Perfect for daily use, this anti-lost device is portable, easy to operate, and designed for quick recovery of misplaced items.

Technical Specifications

Parameter	Details
Product Type	Bluetooth Tracking Device
Wireless Range	Up to 10 meters
Technology	Bluetooth 4.0 Low Energy
Power Supply	Button Cell (not included)
Voltage Range	2.7V – 3.3V
Sensitivity	-94 dBm
Frequency Range	2.402 – 2.480 GHz
Audio Alert	Yes (via App)
Control Method	Single Button, App Control
Material	Durable ABS Plastic
Color	Red
Operating Temperature	-20°C to 70°C
Dimensions	50 x 20 x 10 mm
Weight	11 grams



App Control – Easy Pairing

Download the **iSearching** from the Google Play Store to pair and manage the device.

 Download the Android App – [iSearching](#)

Smart Mini GPS Tracker Waterproof Bluetooth Anti-Lost Device

This product is a Bluetooth wireless device running the 'isearching' application. Before using it, you need to place the things that are easily lost with the product together. In the effective Bluetooth connection range (About 25meters/75fft no barrier), you can make the product beeps to find your things with your phone's app, you can double-click the product's button to cause your phone ring, and you can use the product to take photos. (With these features, you can find anything you want to find with ease. Such as, keys, bags, remote control, wallet, mobile phone...)

*When the product is out of range with your phone's Bluetooth, the alert will be triggered in both of the product and your phone, and last lost location will be marked on the map in the 'isearching' app. (To use this feature, you need to open '**Phone Alarm While Lost function**' in the setting. With these features, your belongings and mobile phone will be protected in a specified range. If you forget to take your belongings, you will be reminded with your phone's alert. If your phone is left behind, you will be reminded with the tracker's alert.)*

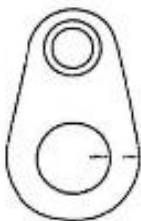
In order to use the product, your device will need both of the following:

1. Bluetooth 4.0
2. IOS11.0 and higher, Android 8.0 and higher.

APP DOWNLOAD AND INSTALL

1. You can download the 'isearching' APP from the APP Store.
2. You can download the 'isearching' APP from the Google Play.

POWER ON/OFF



Power On:

*Hold down the tracker's function button for at least 3 seconds.
You will hear two beeps, the tracker is now powered on.*

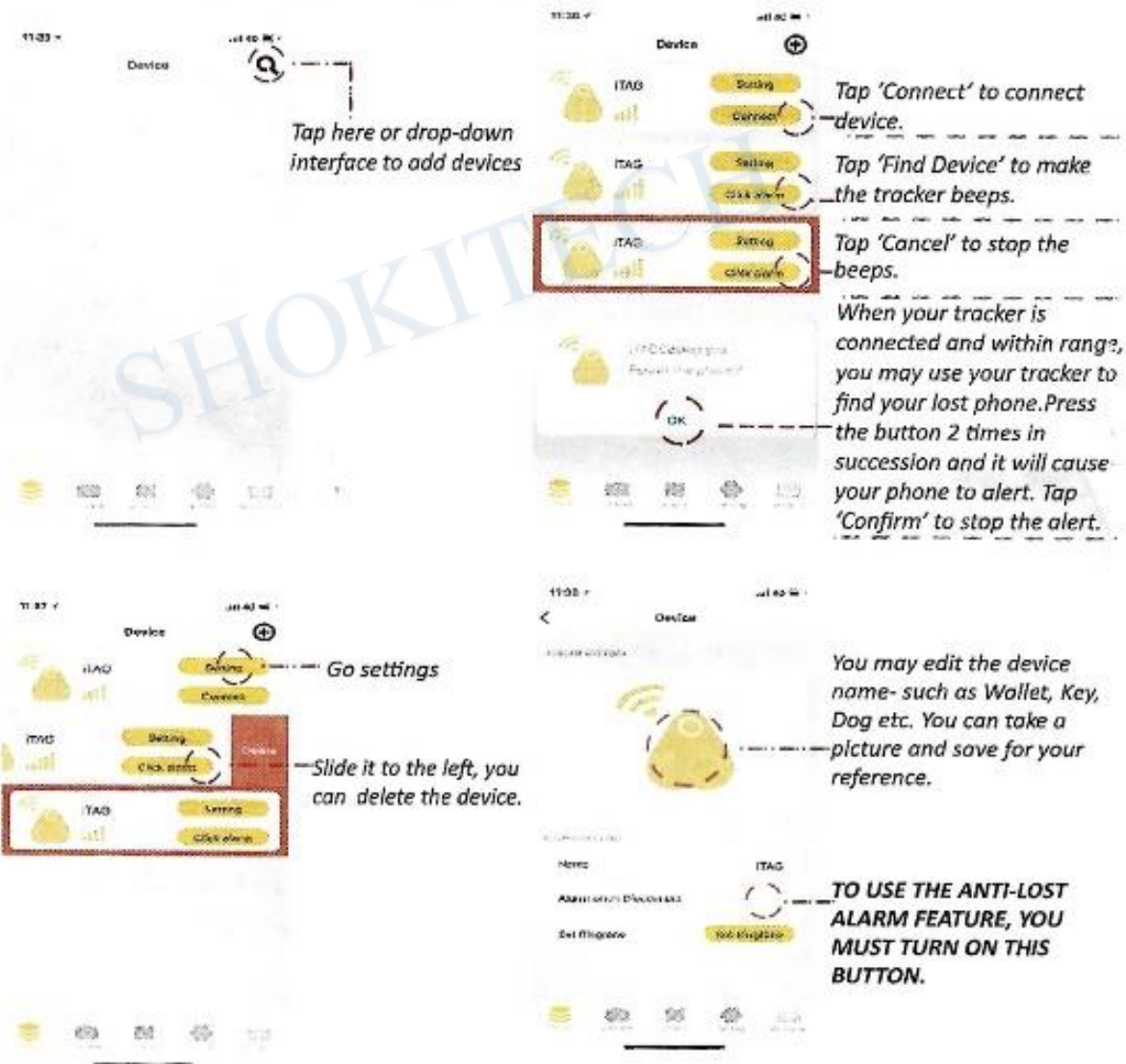
Power Off:

*Hold down the tracker function button for at least 3 seconds.
You will hear a long single beep. The tracker is now powered off.*

Smart Mini GPS Tracker Waterproof Bluetooth Anti-Lost Device

START APP

Open the app on your smart phone. Please take time to review the tutorial page. Please click the "Allow" of the notifications of the APP.



Smart Mini GPS Tracker Waterproof Bluetooth Anti-Lost Device



SELFIE

Press 'Camera', the camera will show up. Press the connected tracker's button to take the photo, it works as a remote shutter. Switch the front and rear camera.

Switch 'No disturbance' on, alarm function of all devices will be deactivated.

Setting for alarm or voice recording.

Voice records will be here.

LOCATION

Location History: When you park your car, press the tracker's button, it will mark your current location on the map. Press the location history you will find your vehicle.

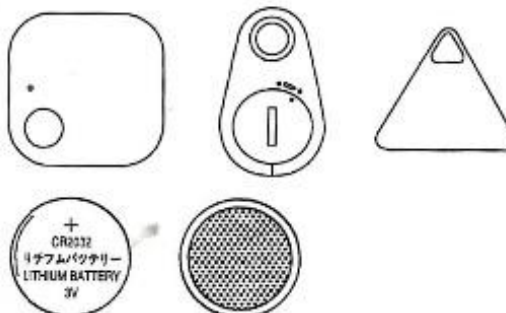
Lost History: If you lost your tracker, you can find it in 'Lost History'. A pin-drop will be marked automaticall on map and it will tell you the tracker's location. Just press 'Lost History' to find the record.

BATTERY REPLACEMENT

Battery type: CR2032

The CR2032 is a standard sized battery and easy to purchase.

Open the case from the button of the device and replace the battery.



Contact Information

ShokiTech

Email: sales@shokitech.com

Website: www.shokitech.com